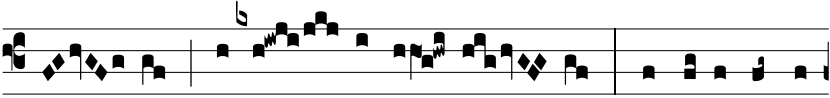


Resp.

2.

D

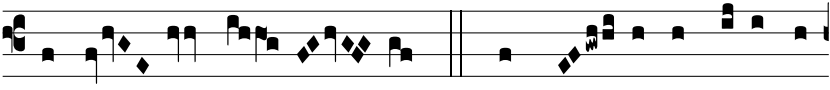
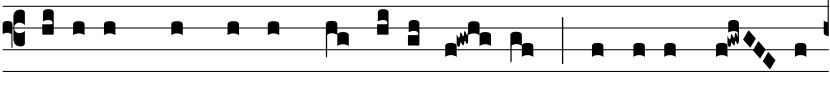
omi-ná-tor,* Dó-mi-ne cœ-ló-rum et



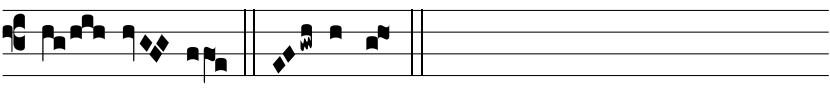
ter-ræ, Cre-á-tor a-quá-rum, Rex uni-vérsæ



cre-a-tú-ræ tu-æ: † Ex-áudi o-ra-ti-ó-nem

servó-rum tu-ó-rum. Ψ Tu, Dó-mi-ne, cu-i hu-

mí-li-um semper et mansu-e-tó-rum plá-cu-it de-pre-



cá-ti-o. † Ex-áudi.