

Resp.

2.

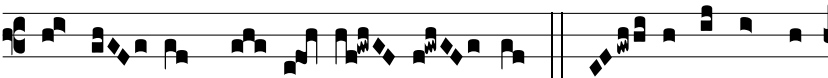
R



e-fúl- sit sol* in clýpe- os au- re- os, et resplen-



du-é-runt mon- tes ab e- is: † Et for-ti-tú- do



gén-ti- um dis- si- pá- ta est. *Ÿ* E- rat e-nim ex-



érci-tus magnus valde et for- tis: et appro-pi- á-vit Judas



et exérci-tus e-jus in proe- li- o † Et.