

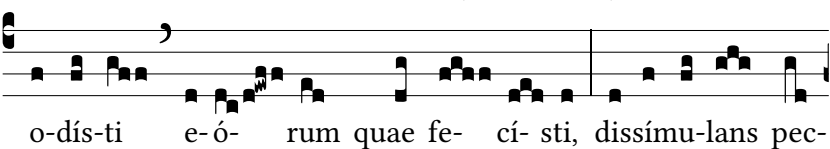
Intr.

1.

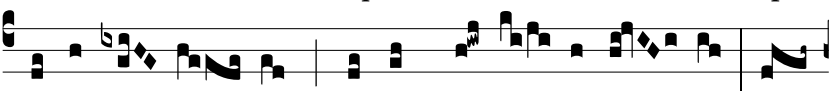


M

I-SE-RÉRIS * omni-um, Dó-mi-ne, et ni-hil



o-dís-ti e-ó-rum quae fe-cí-sti, dissímu-lans pec-



cá-ta hó-mi-num propter pae-ni-ténti-am, et



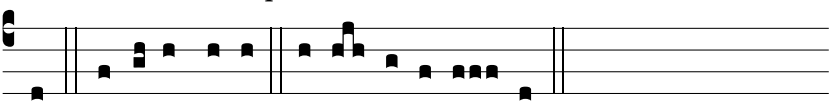
par-cens il-lis: qui-a tu es Dó-minus



De-us nos-ter. *Ps.* Mi-se-ré-re me-i De-us, mi-



se-ré-re me-i: * quó-ni-am in te confi-dit á-ni-ma me-



a. Gló-ri-a Patri. E u o u a e.