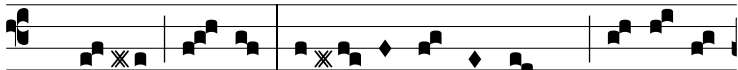
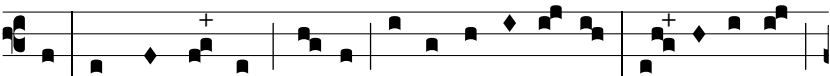


Intr.



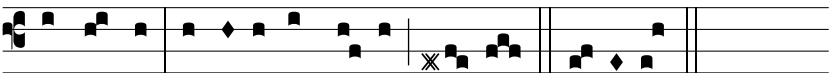
**C** i-bá- vit e- os ex á-di-pe frumén-ti, al-le-lú-



ia: et de pe-tra, mel-le sa-tu-rá-vit e- os, al- le-lú-ia,



al-le-lú-ia, al- le- lú-ia. Ps. Exsultá-te De-o, ad-ju-tó-



ri nostro: iu-bi-lá-te De- o Ia-cob. Glo-ri- a.