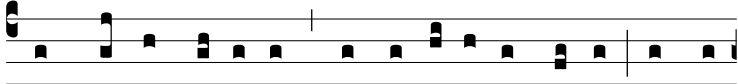


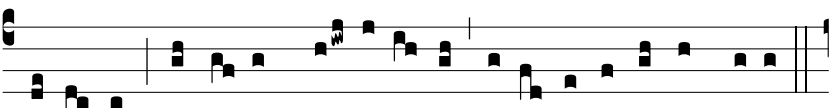
Ant.
8 g.



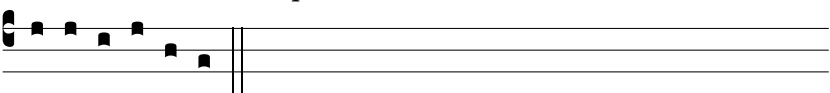
Cum turba plú-rima * convé-ni-ret ad Ie-sum et de



ci- vi-tá-ti-bus pro-pe-rá-rent ad e-um, di-xit per simi-li-



tú-di-nem: Ex-i- it qui sé-mi-nat semi-ná-re semen su-um.



E u o u a e.