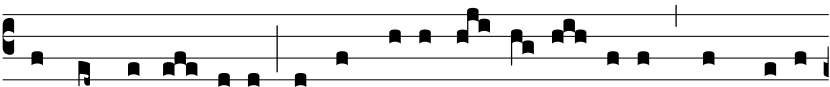


Ant.  
5.

**D** OMI-NE, \* tu mi-hi la-vas pedes? Respondit Je-



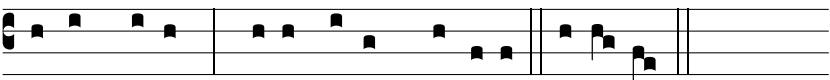
sus, et di-xit e-i: Si non láve-ro ti-bi pedes, non habé-



bis partem me-cum. *Ψ*. Ve-nit ergo ad Simónem Petrum, \*



et di-xit e- i Petrus. Dómi- ne. *Ψ*. Quod ego fá- ci- o, tu



nescis modo: \* sci- es autem póste- a. Dómi- ne.