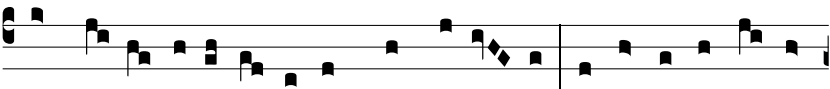


Ant.  
8 g2.

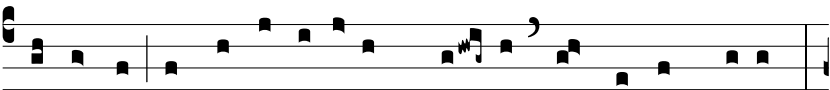


**Z**

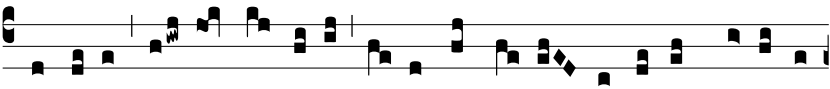
achæe, fe-stí-nans descénde, qui-a hó-di-e



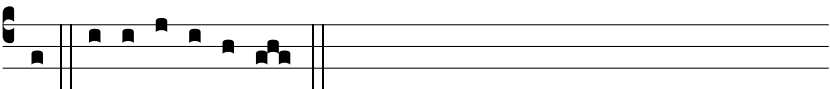
in domo tu-a o-pórtet me mané-re. At il-le fe-stí-nans



descéndit et suscé-pit illum gau-dens in domum su-am.



Hó-di-e hu-ic dómu-i sa-lus a De-o facta est, alle-lú-



ia. E u o u a e.