

Grad.
2.

T



OL-LITE * por- tas, prin- ci- pes, ve-



stras: et e-le-vá- mi-ni por- tae ae- ter-



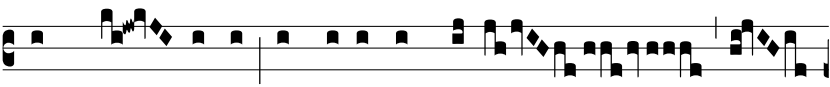
ná- les: et intro-í- bit



Rex gló-ri- ae. Ψ .



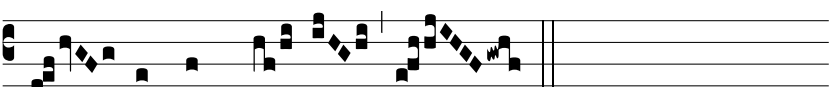
Quis ascéndet in montem Dó- mi- ni?



aut quis sta-bit in loco sancto e-



jus? Inno-cens má- ni-bus



et mundo * cor-de.