

Resp.

2.
E



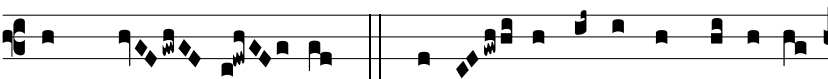
x-súlta sa-tis, fí-li-a Si-on;



jú-bi-la, fí-li-a Je-rú-sa-lem: ecce Rex tu-us vé-ni-



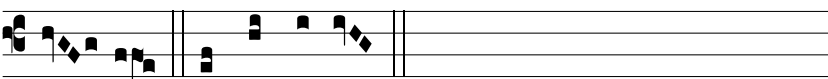
et ti-bi justus et Sal-vá-tor: † Et loqué-tur pa-



cem Gén-ti-bus. Ψ Po-té-stas e-jus a ma-ri us-



que ad ma-re: et a flumí-ni-bus usque ad fi-nes



ter-ræ. † Et loqué-tur.