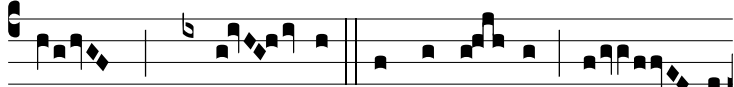
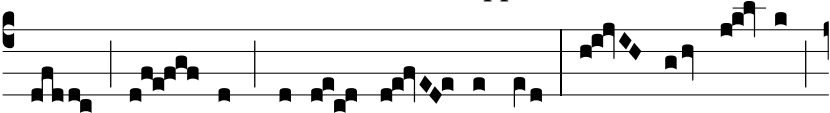


Resp.

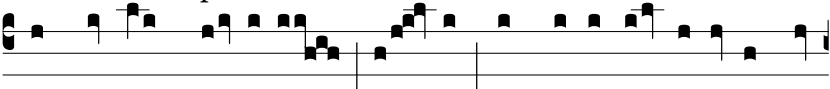
1.
E



c- ce appa-ré- bit Do- mi-



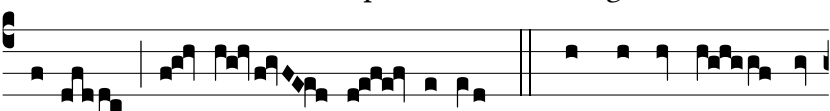
nus su- per nubem can- di-dam et cum e- o



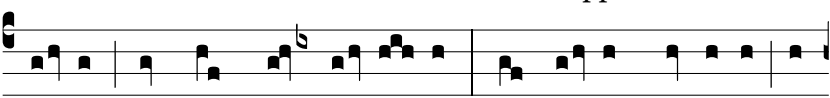
sancto-rum mil- li- a, ha- bens in vestimén-to et in fé-



mo-re su- o scri- ptum: * Rex re- gum et Do-



minus do- mi- nan- ti- um. ♯. Appa- ré- bit in



fi- nem, et non men- ti- é- tur : si mo- ram fé- ce- rit, ex-



spécta e- um, qui- a vé- ni- ens, vé- ni- et. * Rex.