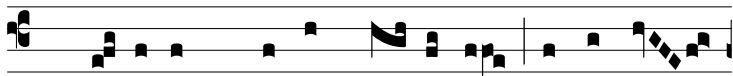


Resp.

2.
F

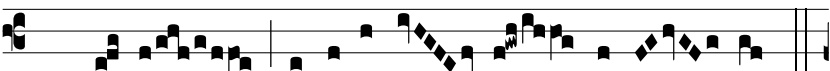
undá- ta est * domus Dó- mi- ni supra vér-



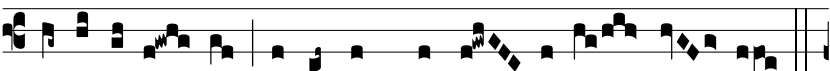
ti- cem mónti- um, et ex- al- tá- ta- est super om-



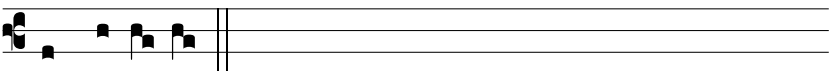
nes col- les : * Et vé- ni- ent ad e- am omnes gen- tes,



et di- cent : Gló- ri- a ti- bi Dómi- ne.

*T.P.* Alle- lú- ja. V. Ve- ni- én- tes autem vén- i- ent cum ex-

sul- ta- ti- ó- ne, portántes ma- ní- pu- los su- os.



* Et vé- ni- ent