

Resp.
2.
N



on aufe-ré-tur* scep- trum de Ju-da, et duc



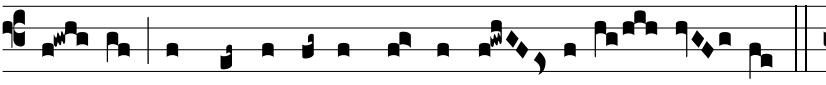
de femó-re e-jus, donec vé- ni- at quimi-téndus



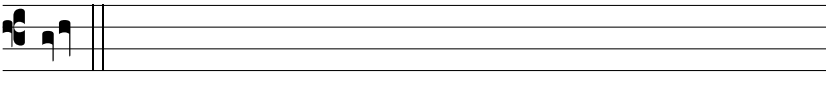
est: † Et ipse e- rit exspectá- ti-



o Génti- um. *Ψ* Pulchri- ó- res sunt ócu-li e- jus



vi- no, et dentes e-jus lac-te can- di-di- ó- res.



† Et.