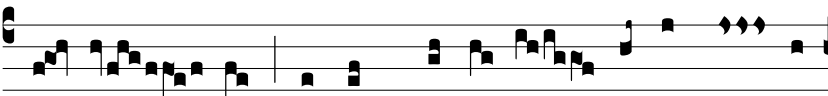


Resp.
3.



M

e opórtet mí- nu- i, * il- lum au- tem



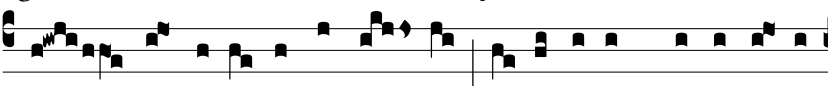
cré- sce- re: qui post me ve- nit, ante me fac-



tus est: † Cu- jus non sum di- gnus corrí-



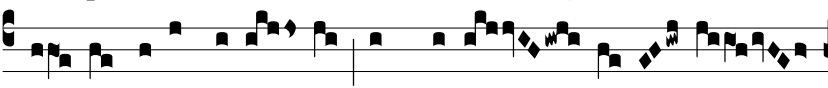
gi- am calci- amén- ti e- jus- sólve- re. Ψ E-



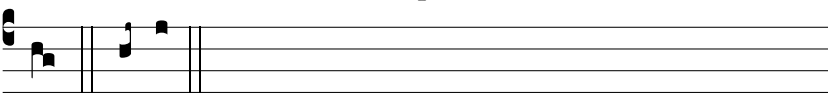
go bap- ti- zá- vi vos a- qua: il- le autem bap- ti- zá- vit



vos Spí- ri- tu San- cto. † Cu- jus. Ψ Gló- ri-



a Pa- tri, et Fí- li- o, et Spi- rí- tu- i San-



cto. † Cu- jus.