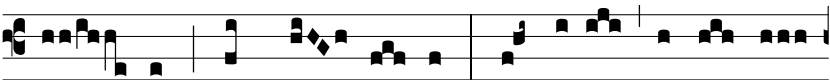


Intr.
2.

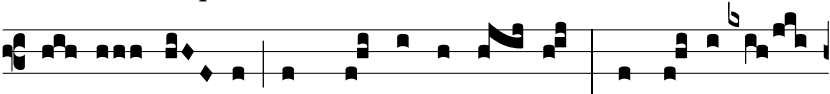
D



DOMINUS * illumi- ná-ti- o me- a, et sa- lus



me- a, quem ti- mé- bo? Dó- minus de- fén- sor



vi- tae me- ae, a quo tre- pi- dá- bo? qui trí- bu- lant



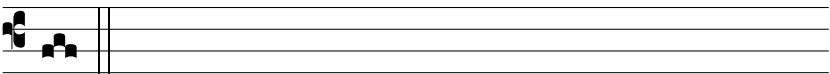
me i- ni- mí- ci me- i, infirmá- ti sunt, et



ce- ci- dé- runt. *Ps.* Si consístant advérsum me castra: *



non timé- bit cor me- um. Gló- ri- a Patri E u o u a



e