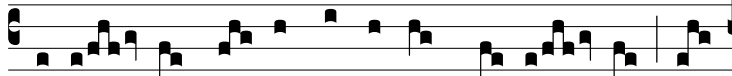


Resp.

7.

B

e- á- ta De- i Gé- ni- trix Ma- rí- a, cu-



jus visce- ra intá- cta pérma- nent: † Hó- di- e



gé- nu- it Salva- tó- rem sáe- cu- li. V Be- á- ta,



quæ cré- di- dit: quóni- am perfécta sunt ómni- a, quæ



di- cta sunt e- i a Dó- mi- no † Hó- di- e.