

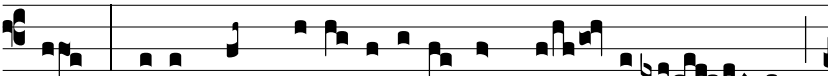
Resp.

2.
S

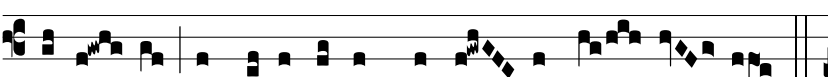
ancta * et imma-cu-lá- ta vir- gí-ni-



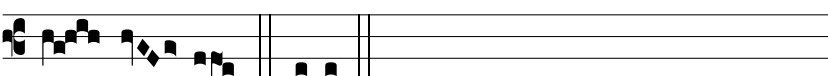
tas, qui-bus te láu-di- bus éffe- ram, né- sci-



o: † Qui- a quem cœ-li cápe-re non pó- te-rant

tu-o gré-mi- o contu-lí- sti. Ψ Bene-dí- cta tu in mu-li-

é-ri- bus, et bene-díctus fructus ventris tu- i.

† Qui- a. Ψ Gló- ri- a Pa-tri, et Fí-li- o, et Spi-rí- tu-

i San- cto. † Qui- a.