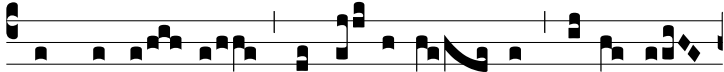


Tract.  
8.



**D**

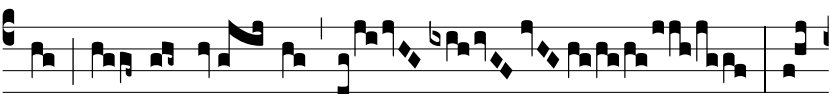
E pro-fún- dis \* clamá- vi ad te, Dómi- ne:



Dómi- ne, exáu- di vo- cem



me- am.  $\Psi$ . Fi- ant aures tu-



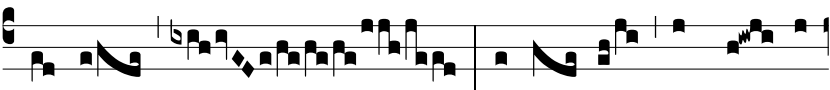
ae in- tendén- tes in



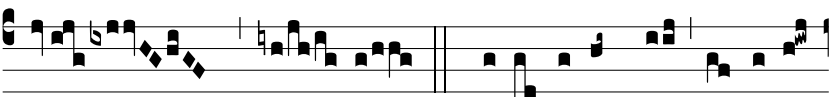
o- ra- ti- ó- nem ser- vi tu-



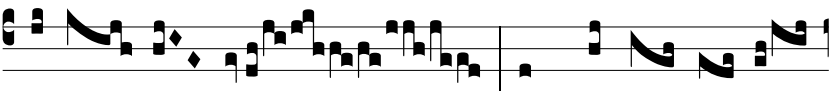
i.  $\Psi$ . Si i- niqui- tá- tes ob- servá- ve- ris, Dó-



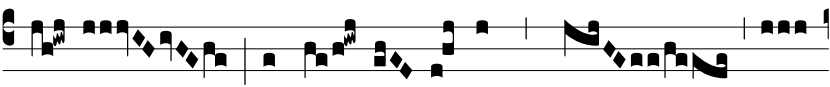
mi- ne: Dómi- ne, quis sus- ti-



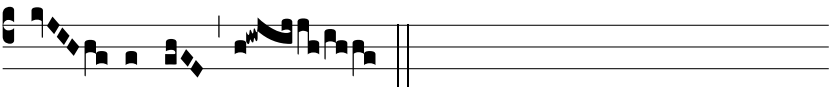
né- bit?  $\Psi$ . Qui- a apud te pro- pi- ti-



á- ti- o est, et propter le- gem



tu- am sus- tí- nu- i te, \* Dó-



mi- ne.