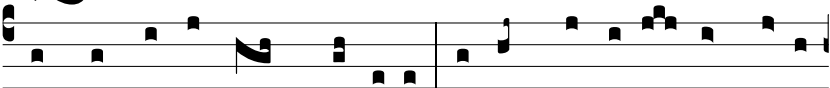


Ant.
3 a2.

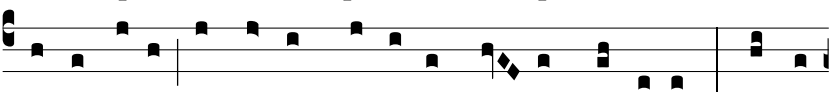


Q

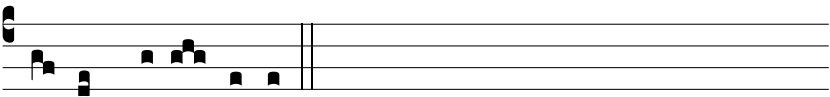
Uando na-tus est * in-ef-fa-bí-li-ter ex Vírgi-ne,



tunc inplé-tæ sunt Scriptú-ræ: si-cut plú-vi-a in vellus



descendísti, ut saluum fá-ce-res ge-nus humánum. Te lau-



dámus De-us noster.