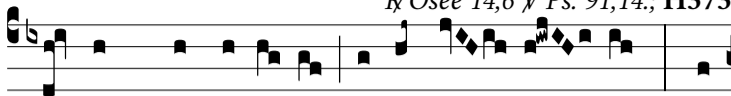
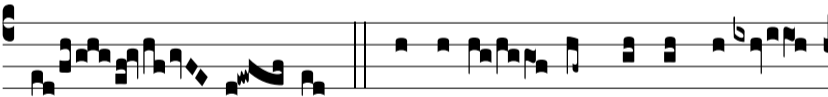


Resp.

1.
J

u-stus * germi-ná-bit si-cut lí- li- um: † Et

flo-ré-bit in æ-tér- num ante Dómi- num. *t.p.* Al-

le- lú- ja. V̇ Plantá-tus in domo Dómi-



ni, in átri- is domus De- i no- stri. † Et flo-ré-bit.