

Comm.

1.

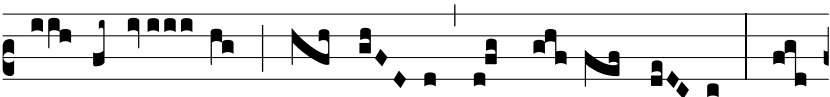
P



ASSER * invé-nit si-bi domum, et turtur ni-dum,



u-bi repó- nat pul-los su- os: altá- ri- a tu- a Dómi-



ne virtú- tum, Rex me- us, et De- us me- us: be-



á-ti qui há-bi- tant in domo tu- a, in saé- cu- lum



saé- cu- li lau- dábunt te.