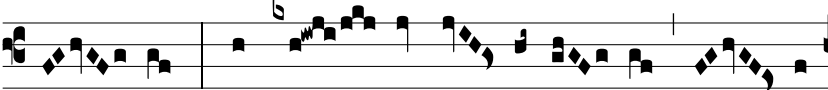


Resp.

2.  
**S**



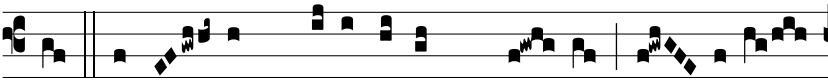
au- lus qui et Pau- lus magnus, præ- di-



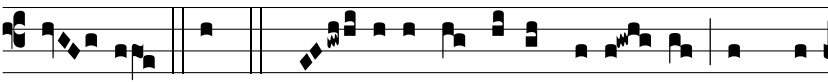
cá- tor, † A De- o con- fortá- tus con- va-



le- scé- bat et confundé- bat Ju- dá-



os *ŷ* Ostén- dens qui- a hic est Chri- stus, Fí- li- us



De- i. † A. *ŷ* Gló- ri- a Pa- tri, et Fí- li- o, et Spi-



rí- tu- i San- cto. † A.