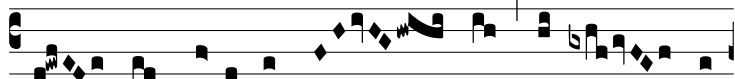
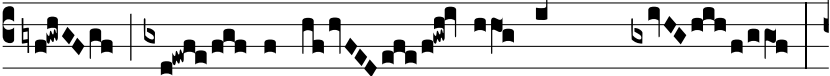


Resp.

5.
S



ur- ge,* illumi- ná- re, Je- rú- sa-



lem, qui- a ve- nit lumen tuum



† Et gló- ri- a Dó-mi-ni super te or-



ta est. ∨ Et ambu-lábunt Gentes in lúmi-ne tu-



o, et reges in splendó-re or-tus tu- i. † Et.