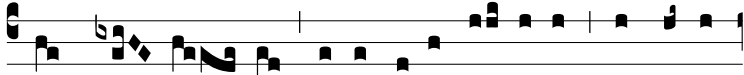
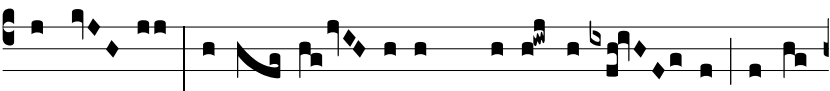


Intr.

1.



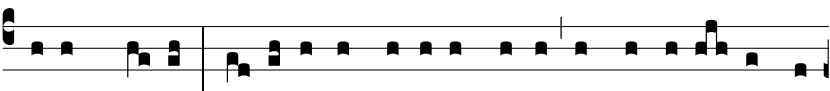
**L** EX DÓ- mi- ni \* irreprensí- bi- lis, convértens



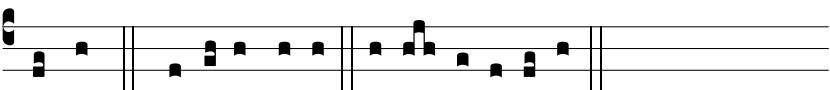
á- ni- mas: testi- mó- ni- um De- i fi- dé- le, sa- pi-



é- nti- am praestans pár- vu- lis. *Ps.* Cae- li enárrant gló-



ri- am De- i: \* et ópe- ra mánu- um e- jus annúnti- at firma-



méntum. Gló- ri- a Patri. E u o u a e.