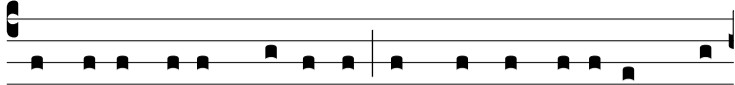


R. br.



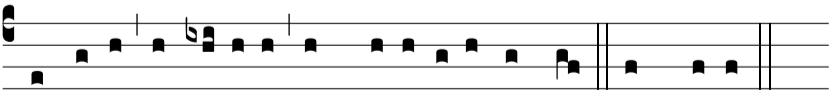
In manus tu-as, Dómi-ne, comméndo spí-ri-tum me-



um: Al-le-lú-ia, alle-lú-ia. In manus. Ψ . Redemísti nos,



Dómi-ne, De-us ve-ri-tá-tis. * Al-le-lú-ia, alle-lú-ia. Gló-ri-



a Pátri, et Fí-li-o, et Spi-rí-tu-i Sáncto. In manus.