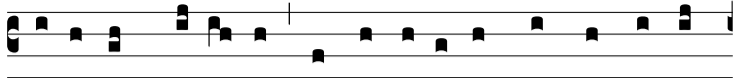


Ant.  
7 c.



**A**

Nge-lus Dómi-ni \* appá-ru-it in somnis Io-seph,



di-cens: Io-seph, fi-li Da-vid, no-li timé-re accí-pe-re Ma-



rí-am cónjugem tu-am: quod e-nim in e-a na-tum est,



de Spí-ri-tu Sancto est. *T. P.*: Alle-lú-ia.