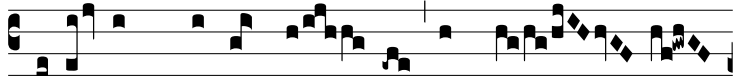


Resp.

7.

R



Ecés-sit \* pástor nó- ster, fons á- quæ



ví- væ, ad cú- jus tránsi-tum sol ob-scu-rá-



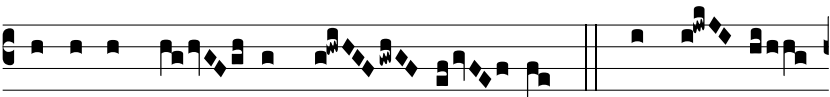
tus est: nam et íl- le cáptus est, qui ca-



ptí-vum tenébat prí- mum hómi- nem: \* Hó- di-



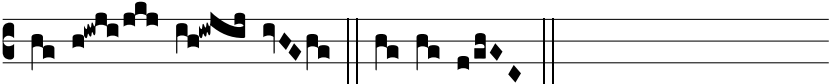
e pór- tas mór- tis et sé- ras pá- ri-ter



Salvá- tor nó- ster dis- rú- pit. Ψ. Destrú- xit



qui-dem claustra infér- ni, et sub- vértit pot- énti- as



di- á- bo- li. Hó- di- e.