

**B**



Ene-dí-ctus es, Dómi- ne, do-ce me iusti-



fi-ca-ti-ó- nes tu- as : \* Et non tradas ca-



lumni-ánti-bus me su- pér- bis : et respondé-bo ex-



pro-brán- ti-bus mi- hi ver- bum.  $\Psi$ . 1. Vi-di



non serván- tes pa- ctum et ta-be- scé- bam, Dó-



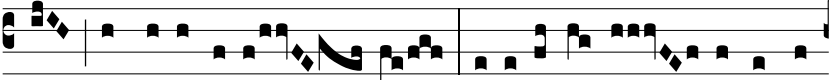
mi-ne, quan-do fá- ci- es de persequénti- bus



me iu-dí- ci- um?  $\Psi$ . 2. Appro-pinquavé-runt perse-



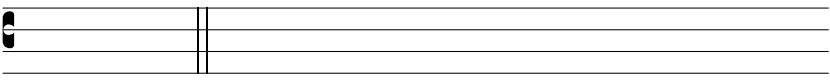
quéntes me in-í- qui : con-fundán-



tur et reve-re-án- tur, qui- a iniúste in-iqui-



tá- tem fe-cé- runt in me.



\* Et non tradas.