

Ant.
3 a2.



Q

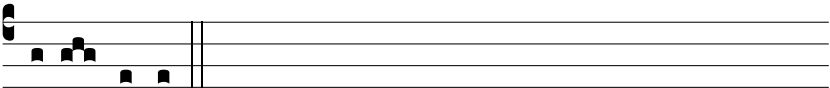
Uando na-tus es * in-ef-fa-bí-li-ter ex Vírgi-ne, tunc



implé-tæ sunt Scriptú-ræ: sic-ut plú-vi-a in vellus descen-



dísti, ut salvum fá-ce-res ge-nus humánum. Te laudámus,



De-us noster.