

Resp.

7.

E

- ram * qua- si a- gnus ínno- cens:



duc- tus sum ad im- mo- lán- dum et ne- sci-é-



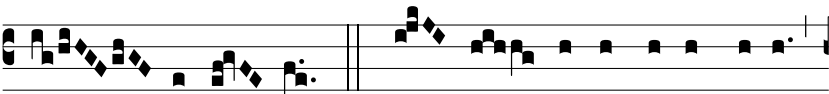
bam: consí- li- um fe- cé- runt in- imí- ci me- i advér-



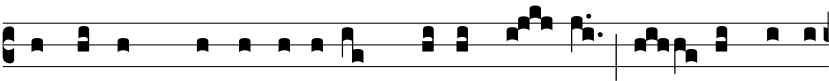
sum me, di- céntes: * Ve- ní- te, mittámus lignum in panem



e- ius, et e- ra- dá- mus e- um de ter- ra



vi- vénti- um. Ψ. Om- nes in- i- mí- ci me- i



adversum me co- gi- tábant ma- la mi- hi: ver- bum in- í-



quum mandavér- unt advérsus me, di- cen- tes: *



Ve- ní- te, R. E- ram * qua- si a- gnus