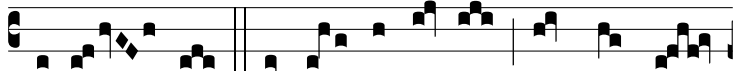


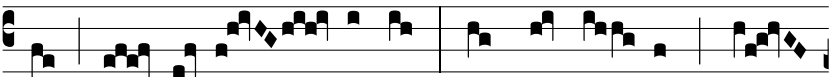
Resp.

7.

A



DVE- NIT ignis di-vi-nus, non combu-



rens sed il-lu- mi-nans, nec con-su- mens, sed



lu- cens; et inve- nit cor- da disci-pu-lo-rum



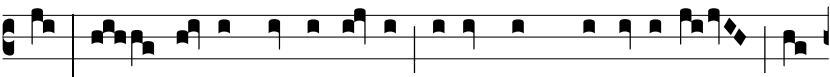
re-cepta- cu-la mun- da: * Et tri- bu- it e- is cha-



ris- ma- tum do- na, al- le- lu- ia, al- le-



lu- ia. √. Inve- nit e- os concordes ca- ri- ta-



te, et il-lustra- vit e- os inundans di-vi- ti- as De-



i- ta- tis. * Et.