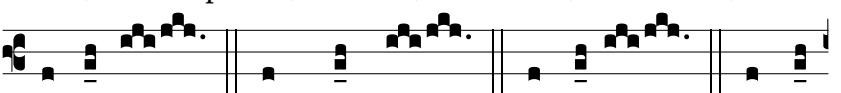
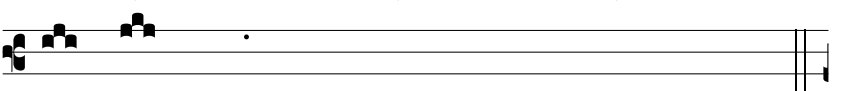


Beda, Ephrem, Le-o, Petre, Thoma,



Albérite, Ambró-si, Antóni, Ansél-



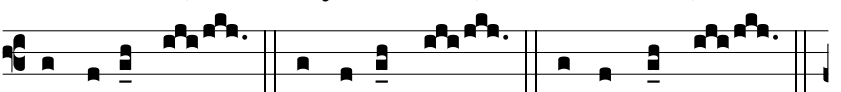
me,



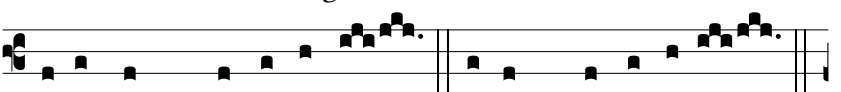
Ba-sí-li, Cy-ríl-le, Francísce, Gregó-ri,



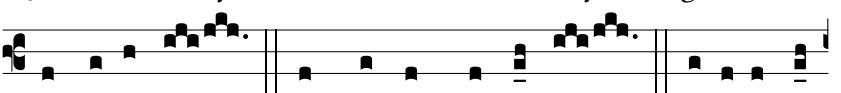
Hi-lá-ri, Jo-ánes, Robérte,



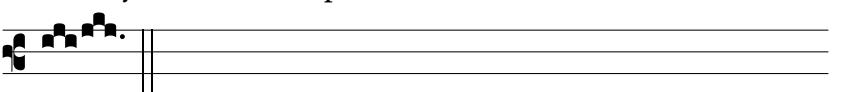
Athaná-si, Augustí-ne, I-si-dó-re,



Jo-ánes Chry-sóstome, Petre Chry-só-loge,



Hie-rónyme, Alphónse Ma-rí-a, Bonaventú-



ra,