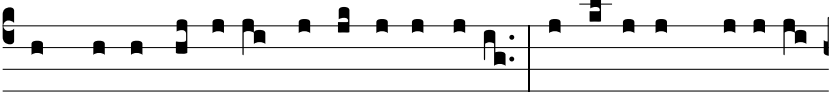


Ant.  
1 g.



**I**N bene-dicti-óne De-i \* et ipse spe-rá-vi; et qua-



si, qui vindémi-at, replé-vi tór-cu-lar: respí-ci-te, quóni-am



non mi-hi so-li labo-rá-vi, sed ómni-bus exqui-rén-ti-bus



disci-plí-nam. *T. P.* Alle-lú-ja. E u o u a e