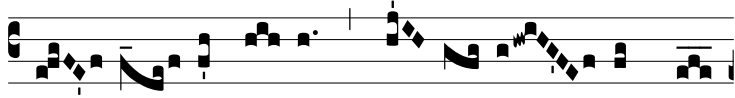


Ant.
8.

A



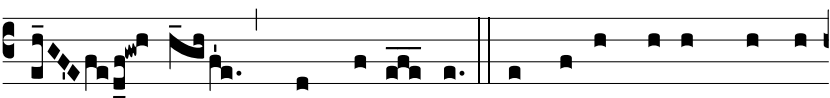
n- ge- le De- i, * qui cu- stos es me-



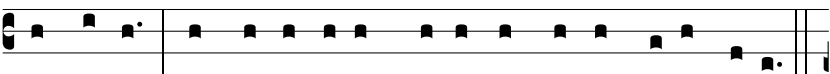
i, me ti- bi comissi- o pi- e- ta- te sup- na, ho-



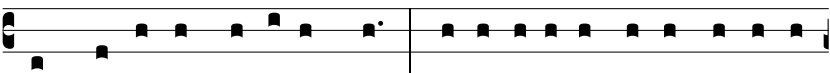
di- e il- lu- mi- na, custo- di,



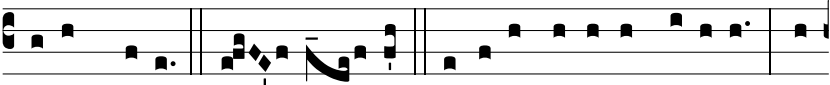
re- ge et guber- na. Ange- lis su- is mandá-



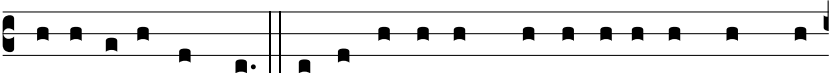
vit de te: * ut custó- di- ant te in ómni- bus vi- is tu- is.



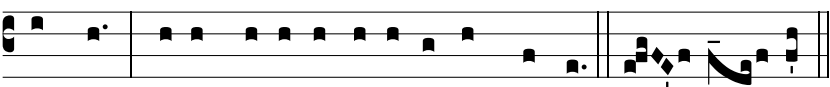
In má- ni- bus portábunt te: * ne forte offé- ndas ad lá- pi- dem



pedem tu- um. An- ge- le Gló- ri- a Pa- tri, et Fí- li- o, * et



Spi- rí- tu- i San- cto. Sic- ut e- rat in prin- cí- pi- o, et nunc, et



semper, * et in sá- cu- la sá- cu- ló- rum. Amen. An- ge- le