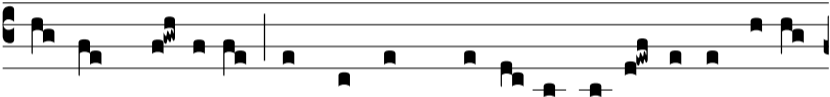


Ant.  
8 G.



**D**

Ó-mi-ne Rex \* omni-pót-ens, in di-ti-ó-ne tu-a cun-



cta sunt pó-si-ta, et non est qui possit re-sís-te-re vo-lun-



tá-ti tu-ae, si decreve-ris sal-vá-re Isra-ël. E u o u a e.