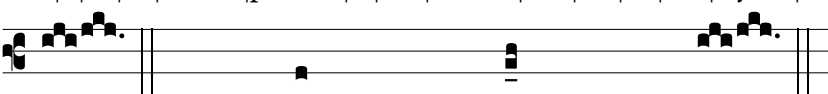
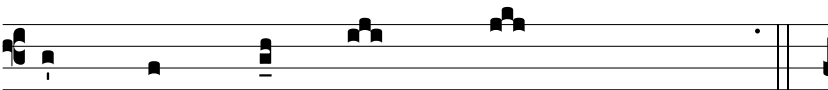


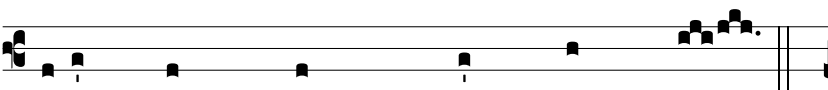
Be|E|Le|Pe|Thoda|phrem |o |tre |ma Al|Am|An|Ba|Ber|Cybér|bró|sél|sí|nár|rí-



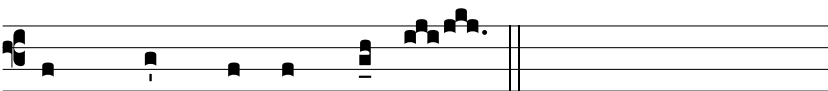
te|si |me |li |de |le Fran|Gre|Hi|Jo|Rocí|gó|lá|án|bérscé|ri |ri |nes |te



A|Au|Itha|gus|siná|tí|dósi|ne |re



Jo-án |Penes|tre Chry| Chry|Hiesós|so|róto|lo|nyne|ge |me



Al|Bophón|nase Ma|venrí|tua|ra