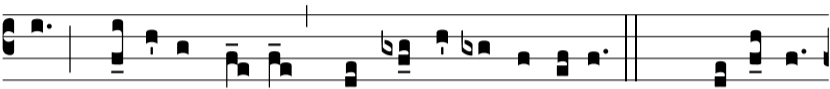


Ant.
4 A.



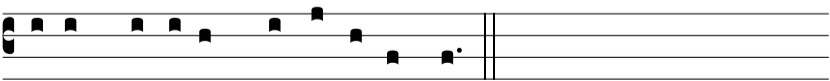
C Lamá-vi ad te Dómi-ne ; * di-xi: Tu es spes me-



a, porti-ó me-a in terra vi-vénti-um. *T. P.* Allé-lu-



ia. *Ps. 141.* Vo-ce me-a ad Dóminum clamá-vi: * vo-ce me-



a ad Dóminum depre-cá-tus sum.