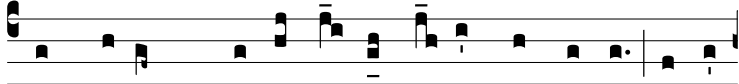


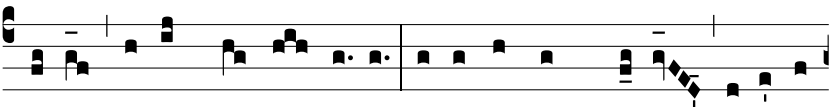
Ant.
8 G.



CUM autem * descendís-set Je-sus de monte, ecce



lepró-sus vé-ni-ens ado-rá-bat e-um, di-cens : Dómi-ne,



si vis, po-tes me mun-dá-re. Et exténdens manum, té-ti-git



e-um, di-cens : Vo-lo, mundá-re. E u o u a e.