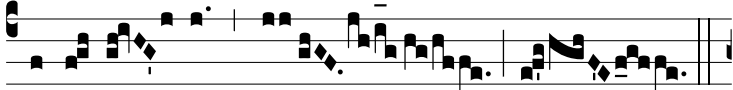


3.

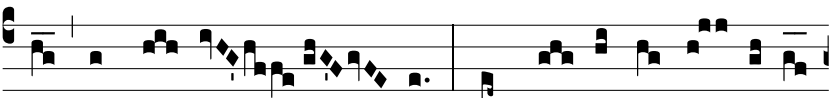


A

L-le-lú- ia. * ij.



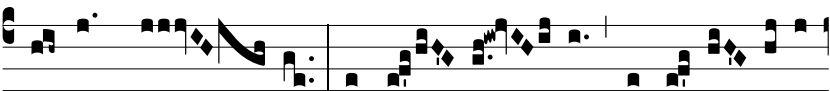
Ψ. In te Dó-mi- ne spe- rá- vi, non confún-



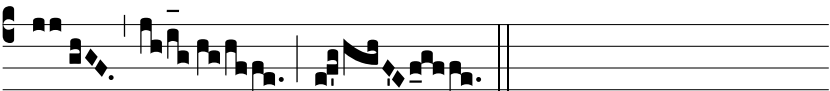
dar in ae- tér- num : in tu- a ju- stí- ti- a



lí-be-ra me, et é-ri-pe me : inclí- na ad me



au-rem tu- am, accé- le- ra * ut e- rí- pi- as



me.