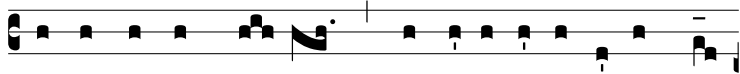
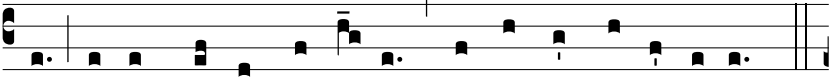


Ant.
8 c.

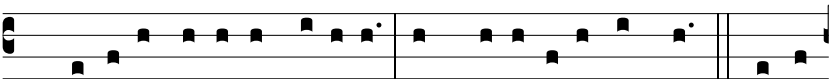


C

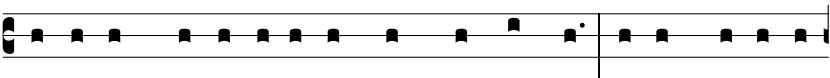
Onfírma hoc De- us, * quod ope-rá-tus es in no-



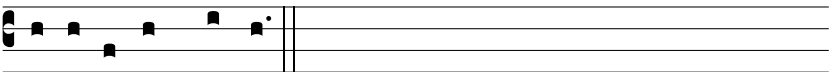
bis : a templo sancto tu- o, quod est in Je-rú-sa-lem.



Ÿ. Gló-ri- a Patri, et Fí-li- o, et Spi-rí-tu- i Sancto. R̃. Sic-ut



e-rat in princí-pi- o, et nunc, et semper, et in saécu-la



saecu-ló-rum. Amen. *Repeat the Ant.* Confírma hoc.