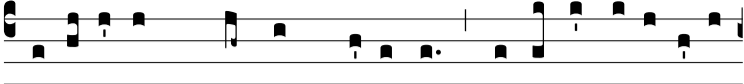


Ant.  
8 G.



S

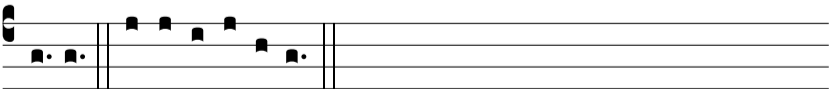
Imi-le est \* regnum caeló-rum hómi-ni nego-ti-a-



tó-ri quaerénti bonas marga-rí-tas : invénta una pre-ti-ó-



sa, de-dit ómni-a su-a, et compa-rá- vit e- am. *T. P.* Alle-



lú-ia. E u o u a e.