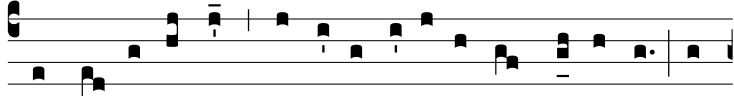
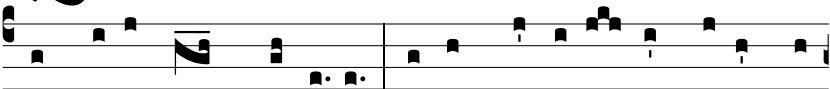


Ant.  
3 a2.

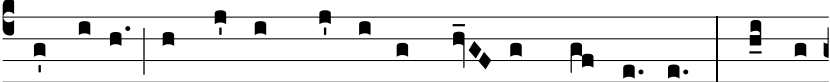


Q

Uando na-tus es \* in-ef-fa-bí-li-ter ex Vír-gi-ne, tunc



implé-tae sunt Scrip-tú-rae : sic-ut plú-vi-a in vellus de-



scendísti, ut sal-vum fá-ce-res ge-nus hu-má-num : te lau-



dá-mus De-us noster. E u o u a e.