

R. br.



M

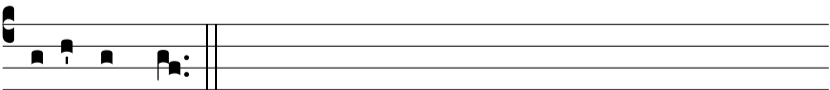
agna est gló-ri- a e- jus in sa- lu- tá- ri tu- o :



* Alle- lú-ia, alle- lú-ia. Ψ . Gló-ri- am et magnum de- có- rem



impónes super e- um. Gló-ri- a Patri, et Fí- li- o, et Spi- rí-



tu- i Sancto.