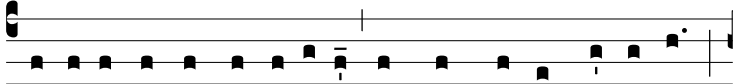
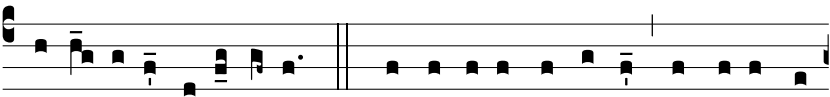


R. br.

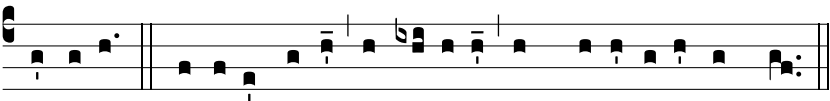


**G**

Lo-ri-ó-sus appa-ru-ísti in conspéctu Dómi-ni :



\* Alle-lú-ia, alle-lú-ia.  $\Psi$ . Proptér-e-a de-có-rem índu-it te



Dóminus. Gló-ri-a Patri, et Fí-li-o, et Spi-rí-tu-i Sancto.