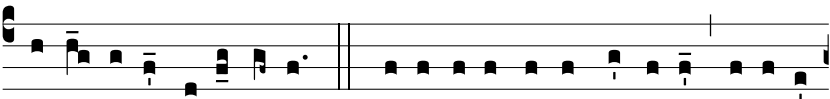


R. br.

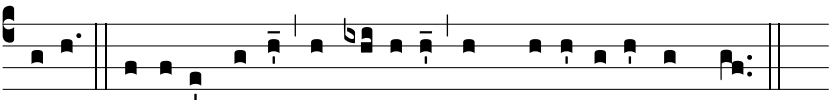


**G**

Ló-ri- a et exémp-lar o-pí-fi-cum, san-cte Jo-seph, \*



Alle-lú-ia, alle-lú-ia.  $\Psi$ . Cu-i obe-dí-re vó-lu-it Fí-li-us



De-i. Gló-ri-a Pa-tri, et Fí-li-o, et Spi-rí-tu-i San-cto.