

Resp.

7.

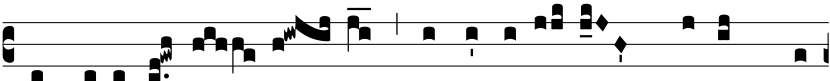
B



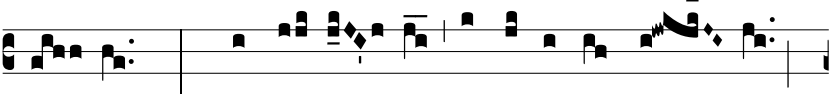
E-á-ta * ví- sce- ra Ma-rí-ae Vírgi- nis,



quae portavé-runt aetér- ni Patris Fí-li- um :



et be-á-ta ú- be- ra, quae lactavé- runt Christum Dó-



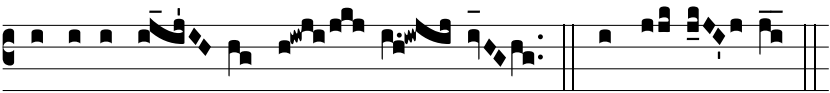
mi- num : * Qui hó- di- e pro sa-lú-te mun- di



de Vír- gi-ne na- sci di- gná-tus est. ∇. Di-



es sancti-fi-cá-tus illú-xit no- bis : ve- ní- te, Gentes,



et ado-rá- te Dó- mi- num. * Qui hó- di- e.