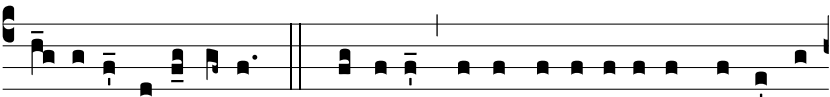


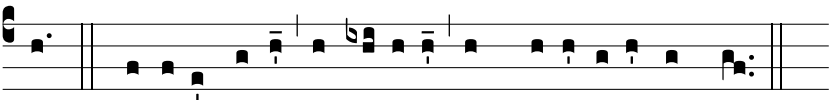
R. br.



L Aetí-ti- a sempi-térna super cá-pi-ta e-ó-rum : * Al-



le-lú-ia, alle-lú-ia. Ψ . Gáudi-um et exsulta-ti-ónem obti-né-



bunt. Gló-ri- a Patri, et Fí-li- o, et Spi-rí-tu- i Sancto.