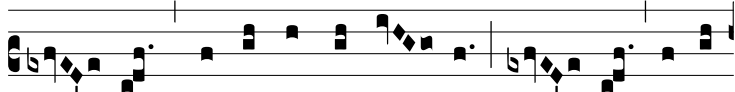


Ant.

6.

A



- ve \* Re-gí-na cæ-ló- rum, A- ve Dómi-



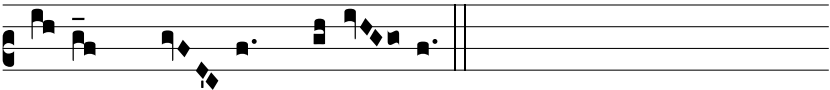
na Ange-ló- rum : Sal-ve ra-dix, salve porta, Ex qua



mun-do lux est or- ta : Gaude Vir-go glo-ri- ó-sa, Super



o-mnes spe-ci- ó- sa : Va- le o valde de-có-ra, Et pro



no-bis Chri- stum \* exó- ra.