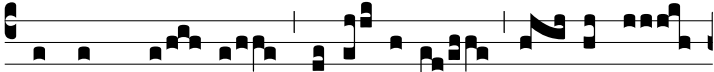


Tract.  
8.

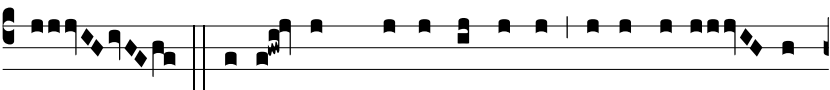


M

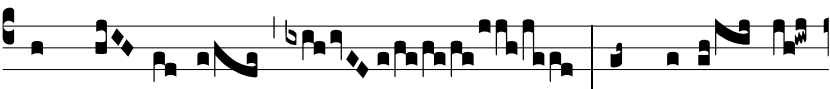
ANUM su- am \* apé- ru- it í- no- pi,



et palmas su- as exténdit ad páu- pe-



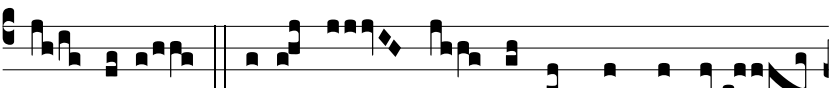
rem.  $\Psi$ . Be- á- tus qui intél- li- git super egé- num,



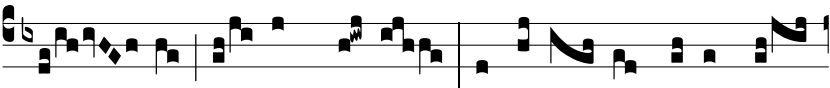
et páu- pe- rem, in di- e ma-



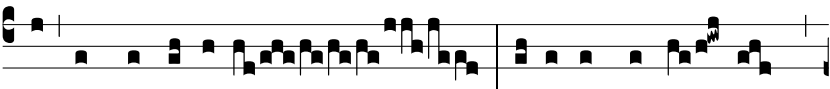
la li- be- rá- bit e- um Dó-



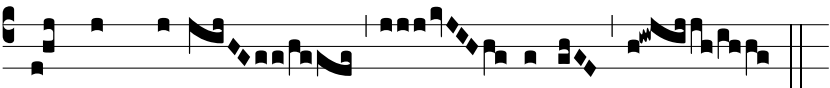
minus.  $\Psi$ . Jucúndus ho- mo, qui mi- se-



ré- tur, et cómmo- dat: dispónet sermónes su-



os in ju- dí- ci- o: qui- a in ae- té- rnum \*



non commové-

bi- tur.