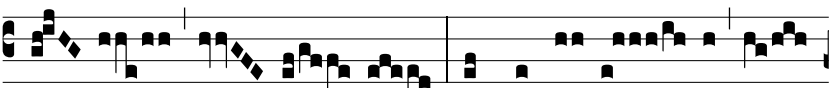


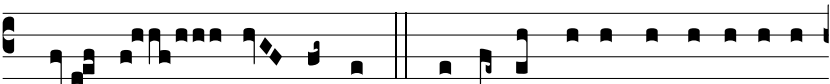
Intr.  
8.



**L**AETÁ-BITUR \* ju-    stus in Dó-mi- no, et spe-



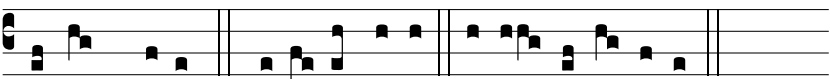
rá- bit    in e-    o:    et lauda-bún-    tur o-



mnes re-    cti corde. *Ps.* Exáudi De- us o-ra-ti- ónem



me- am cum dépre-cor: \* a timó-re i-nimí-ci é-ri-pe á-



nimam me- am Gló-ri- a Patri    E u    o u    a e