

Tract.
2.

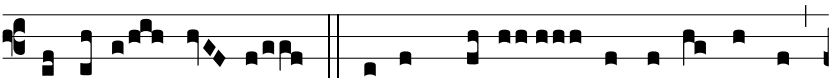
A



UDI fī- li- a, * et vi- de, et in-



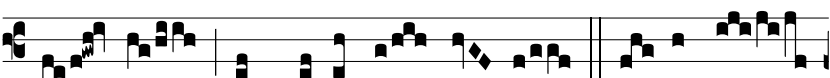
clī- na aurem tu- am: qui- a concu- pí- vit rex



spé- ci- em tu- am ψ. Vultum tu- um depre- ca- búntur



o- mnes dí- vi- tes ple- bis: fī- li- ae



re- gum in honó- re tu- o. ψ. Addu- cén-



tur re- gi vír- gi- nes post e- am: pró-



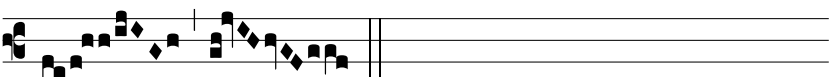
ximae e- jus affe- réntur ti- bi ψ. Addu- cén- tur



in lae- tí- ti- a et exsul- ta- ti- ó- ne:



addu- cén- tur in templum * re-



gis.